

Chyemlow
Droskyn Close (No. 4, 5, 6)
Penhale Road (No. 1, 2, 3, 4, 5, 6, 7, 8 & 9)



HIDDERLEY PARK
CAMBORNE • CORNWALL

The Chyemlow is a traditional and well-proportioned house which combines functionality with good design.

There are both terraced and end of terrace 'Chyemlow' house types available. On the ground floor is a modern kitchen and dining area, separate WC and a nicely proportioned lounge which overlooks the rear garden. Upstairs, are two double bedrooms, storage and a family bathroom.



Chyemlow
Droskyn Close (No. 4, 5, 6)
Penhale Road (No. 1, 2, 3, 4, 5, 6, 7, 8 & 9)



HIDDERLEY PARK
CAMBORNE • CORNWALL

GROUND FLOOR:

Kitchen:

2.70m x 3.06m
(8'10" x 10'0") max

Lounge/Dining:

3.90m x 4.50m max
(12'9" x 14'9") max

W/C:

FIRST FLOOR:

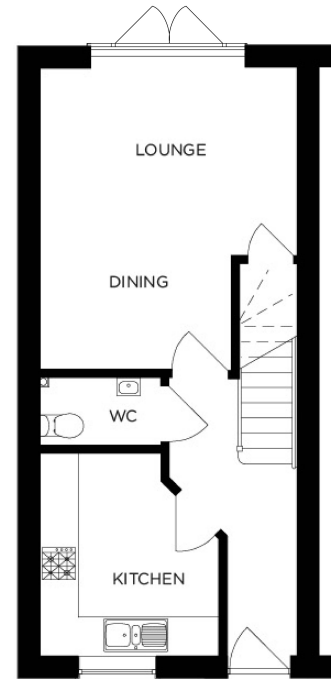
Bedroom 1:

3.90m x 2.86m
(12'10" x 9'4") max

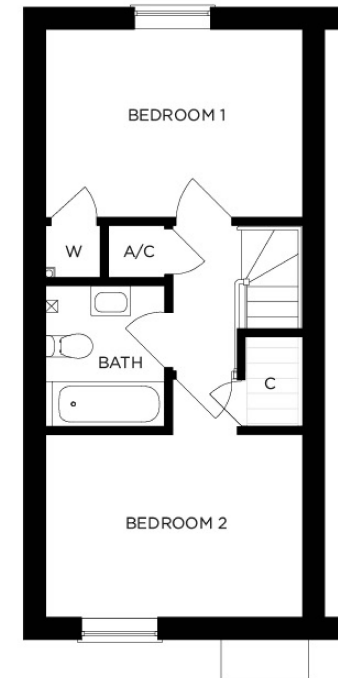
Bedroom 2:

3.90m x 2.78m
(12'10" x 9'1") max

Bathroom:



GROUND FLOOR



FIRST FLOOR

All measurements given are approximate, for further details please contact the agents. Dimensions given are done so in good faith and before construction has commenced. They are approximate and for guidance only and should not be used for furniture or appliance purchases. Purchasers are strongly advised to confirm actual dimensions when the property is nearing completion or is completed.

Tel. 01209 712121
bradleys-estate-agents.co.uk

