

Tonnow
Hidderley Park (No. 57)



HIDDERLEY PARK
CAMBORNE • CORNWALL

The Tonnow is available either as a semi-detached or detached home. It's a house with some very interesting features and an ideal choice for a growing family.

The entrance has a useful porch with integral storage. Inside, there's a large kitchen/dining room which overlooks a garden. Double doors open out from the hallway into a spacious lounge and there's also a separate WC. On the first floor there are three double bedrooms (one with ensuite) and a family bathroom.



Tonnow

Hidderley Park (No. 57)



HIDDERLEY PARK

CAMBORNE • CORNWALL

GROUND FLOOR:

Kitchen:

2.42m x 2.30m

(7'11" x 7'7") max

Dining:

2.82m x 3.32m

(9'3" x 10'11") max

Lounge:

3.35m x 5.65m

(11'10" x 18'6") max

W/C:

FIRST FLOOR:

Bedroom 1 (En Suite):

2.84m x 3.25m

(9'4" x 10'9") max

Bedroom 2:

3.35m x 2.75m

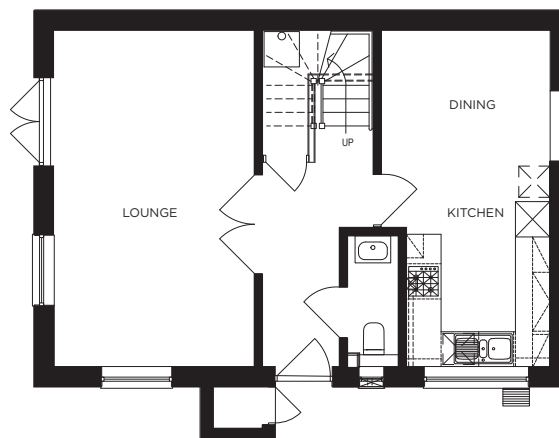
(11'0" x 9'0") max

Bedroom 3:

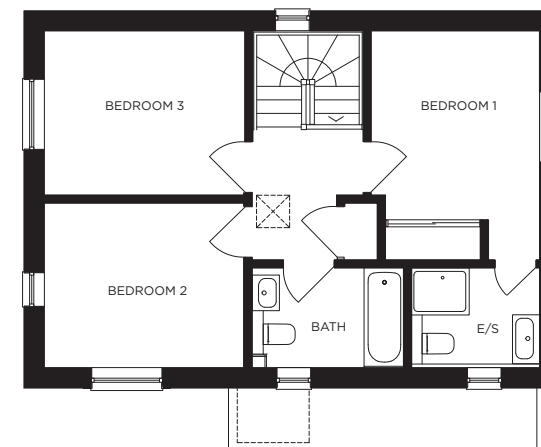
3.35m x 2.75m

(11'0" x 9'0") max

Bathroom:



GROUND FLOOR



FIRST FLOOR

All measurements given are approximate, for further details please contact the agents. Dimensions given are done so in good faith and before construction has commenced. They are approximate and for guidance only and should not be used for furniture or appliance purchases. Purchasers are strongly advised to confirm actual dimensions when the property is nearing completion or is completed.

Tel. 01209 712121
bradleys-estate-agents.co.uk

