

Trevarrack

Mellior Way (No. 2 & 3)

Hidderley Park (No. 54, 56, 66, 74 & 76)



HIDDERLEY PARK
CAMBORNE • CORNWALL

In similar style to the ever popular Chy-An-Glas, 4 bedroom 'Trevarrack' is also one of the most striking houses on the development.

The external appearance of this house combines granite stonework with timber effect cladding, render and a window frontage that spans two floors. Internally, on the ground floor there is a large kitchen/ dining room with feature central island, lounge and ground floor WC. To the first floor are 4 bedrooms, master en suite facilities and family bathroom.



Where timber clad or render sections are shown there will be one of four colour pallets used. This CGI gives an example of just one of the 4 colour ranges. Please enquire with the sale agents for the colour choice on a plot by plot basis.



Trevarrack

Mellior Way (No. 2 & 3)

Hidderley Park (No. 54, 56, 66, 74 & 76)



HIDDERLEY PARK

CAMBORNE • CORNWALL

GROUND FLOOR:

Kitchen/Dining:

6.00m x 3.95m
(19'8" x 12'11")

Lounge:

5.05m x 3.45m
(16'7" x 11'4") max

W/C

FIRST FLOOR:

Bedroom 1:

3.85m x 3.10m
(12'7" x 10'2") max

Bedroom 2:

3.10m x 3.55m
(10'2" x 11'8") max

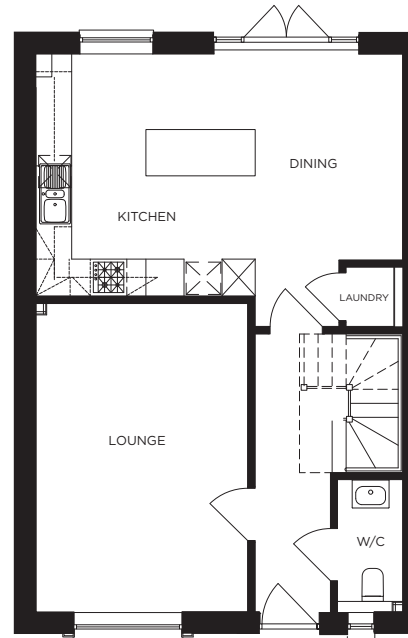
Bedroom 3:

2.75m x 2.47m
(9'0" x 8'1") max

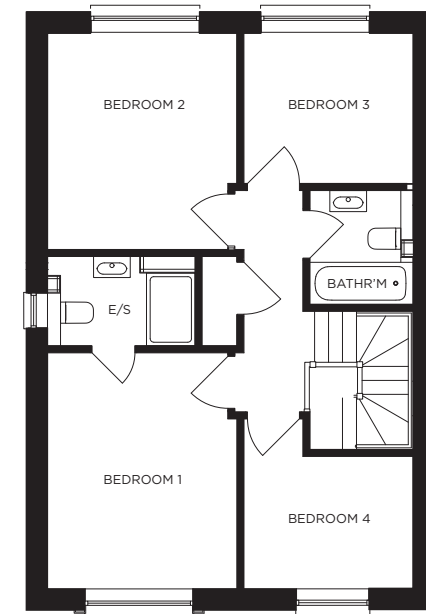
Bedroom 4:

2.75m x 2.15m
(9'0" x 7'1") max

Bathroom:



GROUND FLOOR



FIRST FLOOR

All measurements given are approximate, for further details please contact the agents. Dimensions given are done so in good faith and before construction has commenced. They are approximate and for guidance only and should not be used for furniture or appliance purchases. Purchasers are strongly advised to confirm actual dimensions when the property is nearing completion or is completed.

Tel. 01209 712121
bradleys-estate-agents.co.uk

