

Chy An Glas  
Godrevy Place (No. 3);  
Hidderley Park (No. 58, 60, 62 & 64)



HIDDERLEY PARK  
CAMBORNE • CORNWALL

Perhaps one of the most striking houses on the development, the Chy An Glas is an impressive three bedroom home.

The external appearance of this house combines granite stone work with timber effect cladding, render and a window frontage which vertically spans two floors. Inside, there's a bright and spacious lounge, a kitchen/ dining room which overlooks the garden and a separate WC. On the first floor there is a master bedroom with two further bedrooms and a family bathroom. This stylish home is definitely one not to be missed.



Computer Generated Image



Chy An Glas

Godrevy Place (No. 3);

Hidderley Park (No. 58, 60, 62 & 64)



**HIDDERLEY PARK**  
CAMBORNE • CORNWALL

**GROUND FLOOR:**

**Kitchen/Dining:**

5.20m x 3.40m

(17'1" x 11'2") max

**Lounge:**

3.10m x 4.80m

(10'2" x 15'9") max

**W/C**

**FIRST FLOOR:**

**Bedroom 1:**

2.95m x 4.30m

(9'8" x 14'1") max

**Bedroom 2:**

2.95m x 3.20m

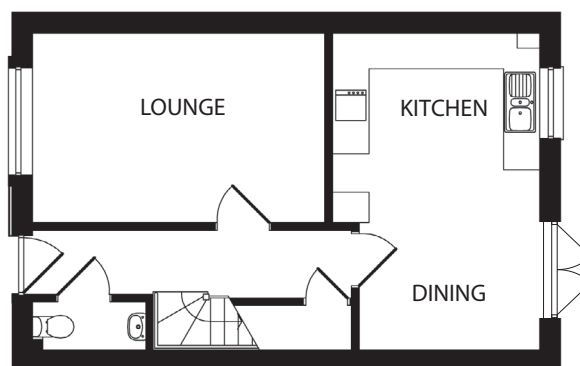
(9'8" x 10'6") max

**Bedroom 3:**

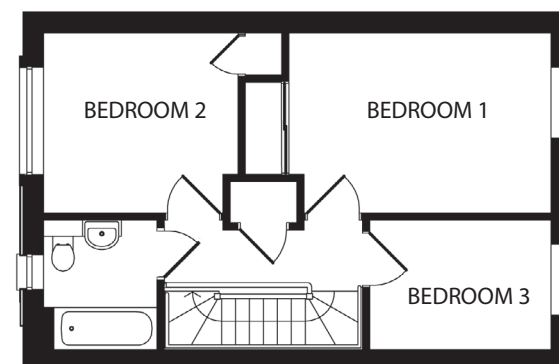
2.11m x 2.97m

(6'11" x 9'9") max

**Bathroom:**



**GROUND FLOOR**



**FIRST FLOOR**

All measurements given are approximate, for further details please contact the agents. Dimensions given are done so in good faith and before construction has commenced. They are approximate and for guidance only and should not be used for furniture or appliance purchases. Purchasers are strongly advised to confirm actual dimensions when the property is nearing completion or is completed.

Tel. 01209 712121  
bradleys-estate-agents.co.uk

